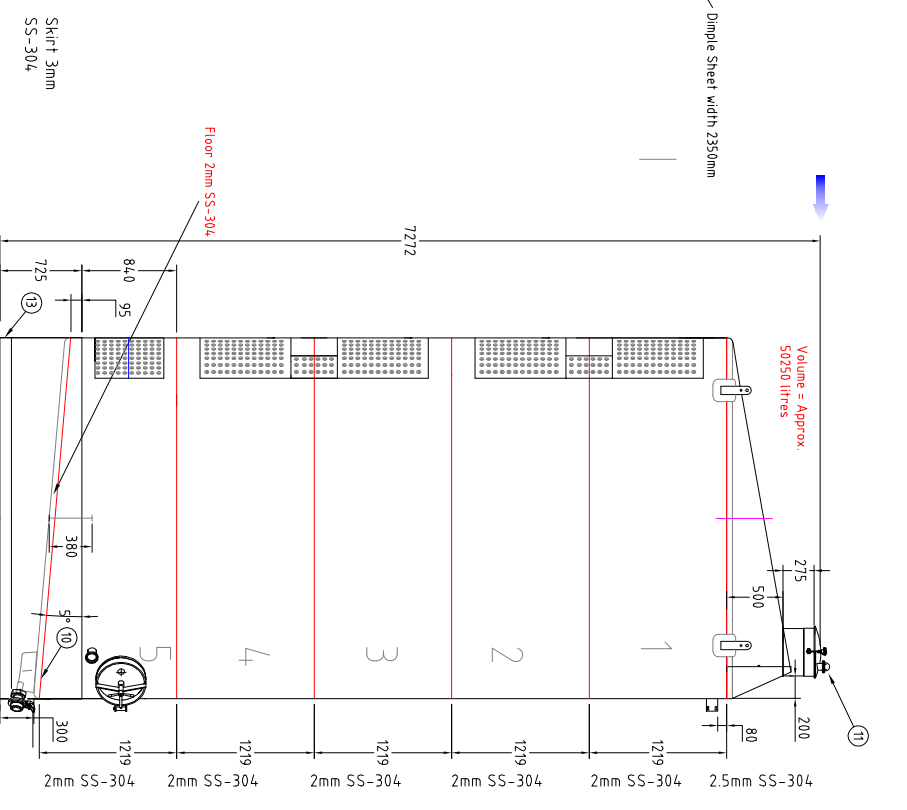
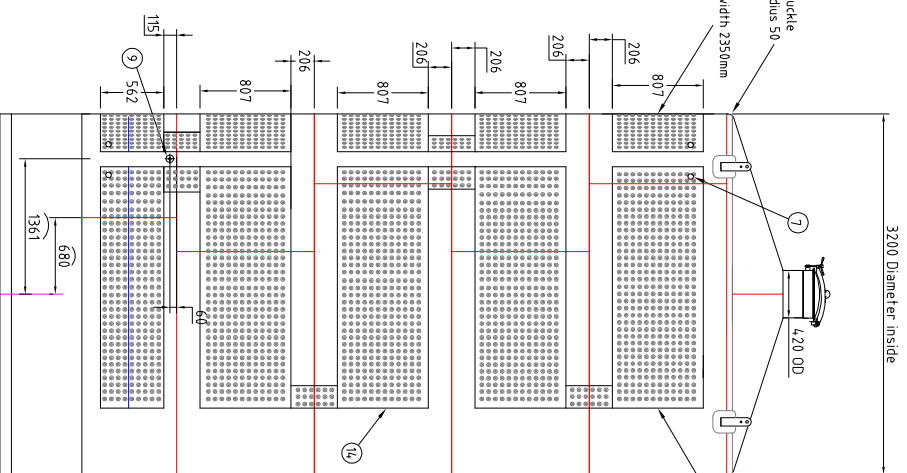
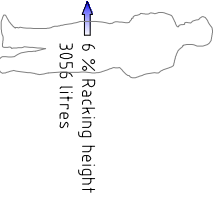
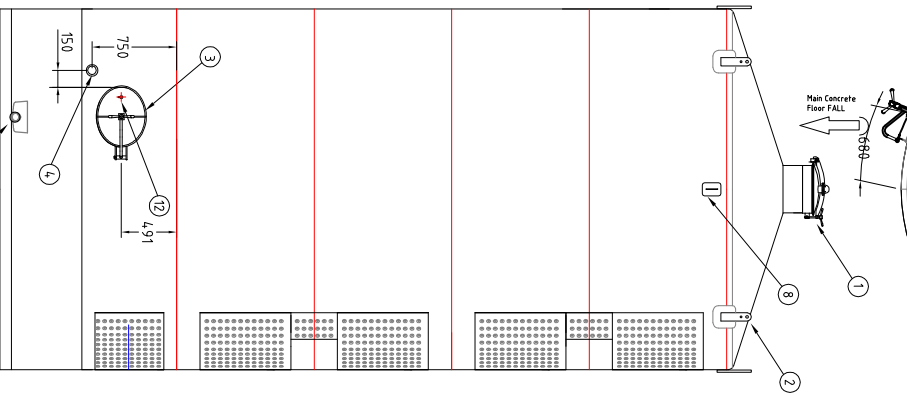


Code Number	Nominal Size	Standard Required	Type of Process
SSWJUT-715-SUN-1841-HD	75mm		

Provision to be made to insulate tanks at later stage. Fittings to be extended by 50mm

NOTES:
27mm Fall over tank diameter - 5 degrees
All internal welds ground & polished 180 grit.

DESCRIPTION	SIZE	QTY
1 HD Round Turret Dia 420		1
2 Lifting Lug-Type 6	270x15x12	4
3 Oval Manway / Type 1 Full Form		1
4 3" Male RJT HD		1
5 3" Male RJT HD		1
6 Doubler for catwalk / SS-304 / 300x300x3		1
7 BSP Nipples / 1 1/2 inch		4
8 Catwalk tie down lug / 100x100x6		1
9 Temperature probe pocket / Dia 12x15x200		1
10 Square guller Width 280xLength 250x Depth 130		1
11 Breather Stainless HD Process 65mm		1
12 HD Sample Valve		1
13 Skirt Ring / SS-304 / 2B / Flat bar 100x10		1
14 Dimple pads / 17 sqm is 35 % coverage (Barrel area 4.8 sqm)		10



TRUFORM STAINLESS LTD
Seddon Drive
Croydon Bay Business Park,
PO Box 191, Blenheim
5HI, Blenheim
Marlborough, NZ
Phone: 03 577620
Facsimile: 03 5776200
Mobile: 0274 358881
Email: john@truformstainless.co.nz
Website: www.truformstainless.co.nz

ORDER REQUIREMENTS

Description	Qty Req	Delivery
50K Fermenter Uninsulated	3	

Villa Maria
Client: 50K Fermenter
Project: 50K Fermenter
Date: 6 November 2008

General Layout

Title	Scale	Rev
General Layout	A3 24/6	A

© 1998 The copyright of this document is the property of Truform Stainless Ltd and shall not be reproduced, copied, loaned or disposed of directly or indirectly, nor used for any purpose other than that for which it is specifically furnished without our prior consent.